

GULF INTRACOASTAL WATERWAY

PORT ALLEN LOCK



Project Location

FY 2023 MAINTENANCE DREDGING

PROJECT: Gulf Intracoastal Waterway
SUBPROJECT: Port Allen Lock Forebay
PROJECT MANAGER: Victor Landry
PHONE: (504) 862-2407
LOCAL SPONSOR: U.S. Government has sufficient interest

DESCRIPTION OF WORK:

Maintain 12' x 125' in lock forebay and underneath guidewall (with an additional 3' of advance maintenance)

HISTORICAL DREDGING FREQUENCY: Annually

LAST DREDGED: 2021

TYPE OF DREDGE: Cutterhead/Bucket

ESTIMATED QUANTITY: 150,000 CY

ESTIMATED COST: \$560,000

ADVERTISE: TBD

OPEN BIDS: TBD

AWARD: TBD

START WORK: TBD

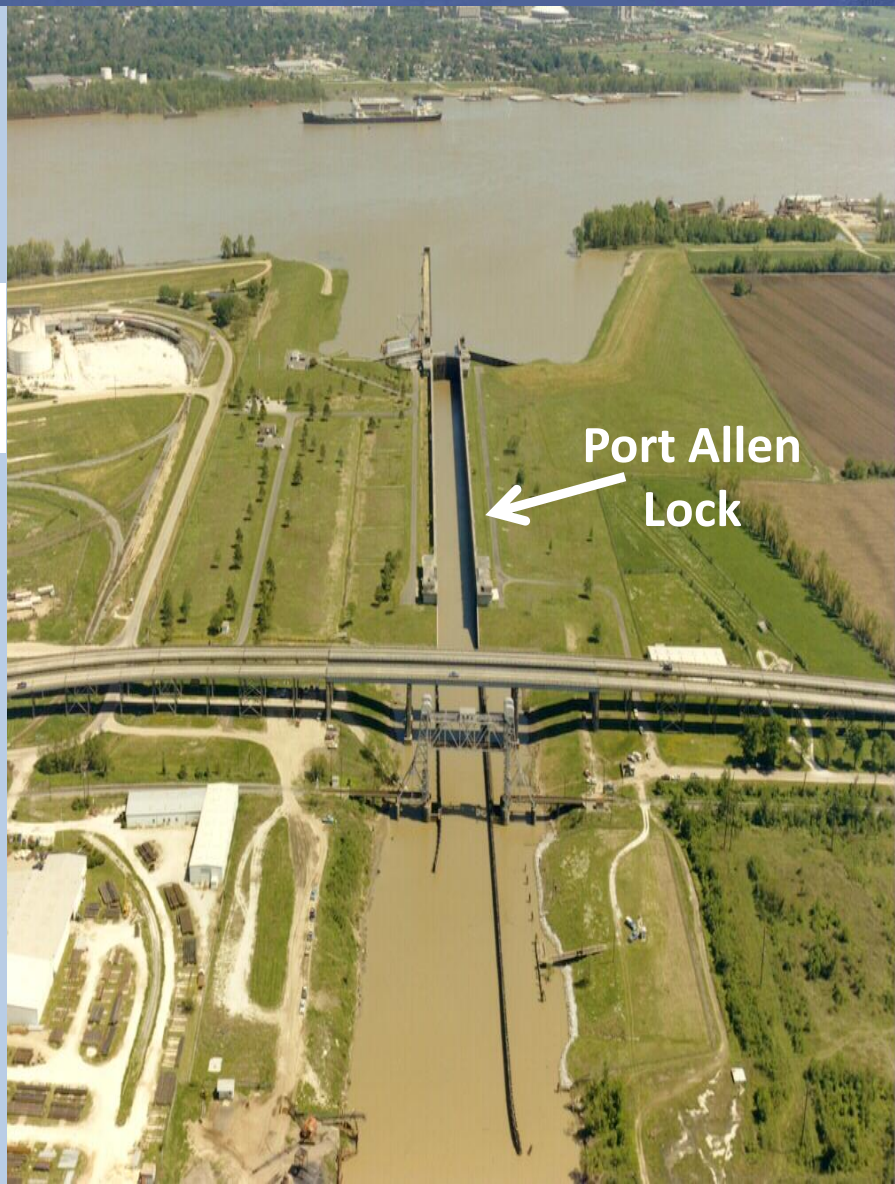
DURATION: 10 days

DREDGING REACH: Lock Forebay

DISPOSAL AREA: Mississippi River

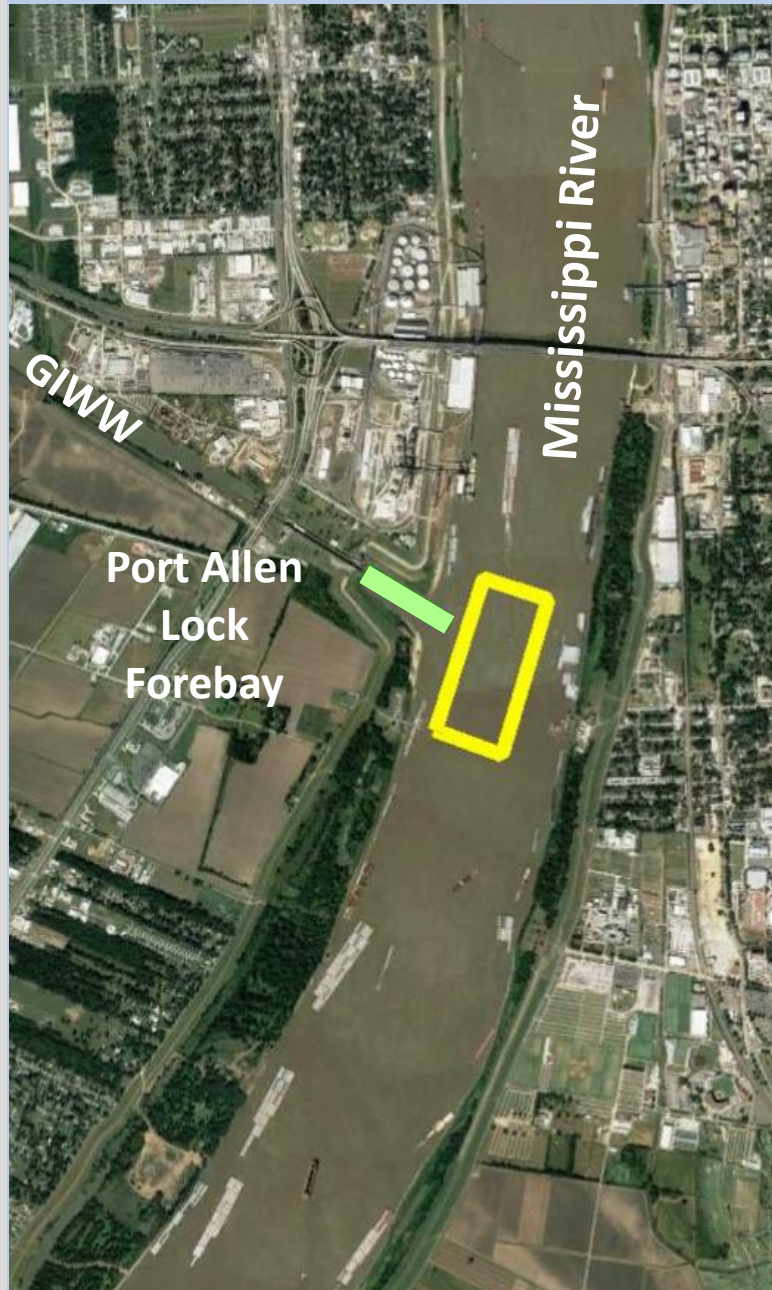
DISPOSAL TYPE: Open Water

REMARKS: Dredged Material discharged beyond the -30' Depth Contour



PORT ALLEN LOCK

Fiscal Year	Disposal Area	Dredging Quantity (CY)
2001	Mississippi River Open Water	228,958
2002	Mississippi River Open Water	121,746
2003	Mississippi River Open Water	96,114
2004	Mississippi River Open Water	186,634
2005	Mississippi River Open Water	25,102
2006	NO DREDGING	
2007	Mississippi River Open Water	170,395
2008	Mississippi River Open Water	133,000
2009	NO DREDGING	
2010	Mississippi River Open Water	90,168
2011	Mississippi River Open Water	111,888
2012	Mississippi River Open Water	133,215
2014	Mississippi River Open Water	254,973
2016	Mississippi River Open Water	248,728
2018	Mississippi River Open Water	374,556
2021	Mississippi River Open Water	279,734



Dredging Reach



Open Water Placement Area